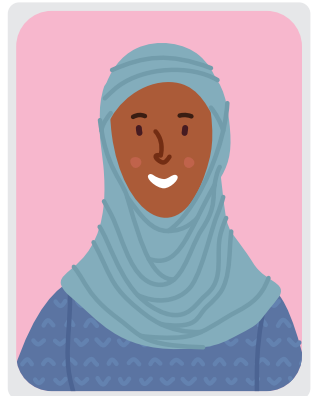






# THE **ADVICE** YOU NEED



# NEAR YOU!

## ADVICE HUB LOCATIONS

Location	Date & time	Advice available
<b>1</b>  The Forum, Trafalgar Road SE10 9EQ Vouchers for the café	Mondays 10am to 12noon	Debt, welfare benefits and housing
<b>2</b>  Migrant Hub - Woolwich Common Community Centre, Leslie Smith Square SE18 4DW Community meal and food parcels	Tuesdays 10am to 1pm	Immigration, housing and general support
<b>3</b>  St Mary's Community Centre, Eltham High Street SE9 1BJ Takeaway frozen meal	Wednesdays 10am to 12noon	Debt, welfare benefits, housing and Domestic Abuse One Stop Shop for women
<b>4</b> Thamesmead Moorings Sociable Club, Arnott Close SE28 8BG <i>*This hub is run by Peabody and funded by the GLA</i>	Wednesdays 9.30am to 12.30pm	Housing, immigration, welfare benefits, employment and Domestic Abuse One Stop Shop for women
<b>5</b>  Glyndon Community Centre, Raglan Road SE18 7LB Takeaway frozen meal	Thursdays 10am to 12noon	Debt, welfare benefits, housing and immigration
<b>6</b> Clockhouse Community Centre, Woolwich Dockyard SE18 5QL	Fridays 9.30am to 12noon	Welfare benefits, housing, immigration and debt

## ROAMING ADVICE HUB LOCATIONS

Location	Date & time	Advice available
<b>7</b> Abbey Wood Community Centre, 4 Knee Hill, Abbey Wood, London SE2 0YS	Every first Tuesday of the month 10am to 12noon	Housing and general advice provided by Citizens Advice Greenwich
<b>8</b> Greenwich West Community and Arts Centre, 141 Greenwich High Road SE10 8JA	Every second Tuesday of the month 10am to 12noon	Housing and general advice provided by Citizens Advice Greenwich
<b>9</b> Storkway Children's Centre, Ridgebrook Road SE3 9QX	Every third Tuesday of the month 10am to 12noon	Housing and general advice provided by Citizens Advice Greenwich
<b>10</b> Coldharbour Community Centre, William Barefoot Drive, Coldharbour Estate, London SE9 3JD	Every third Tuesday of the month 2pm to 4pm	Housing
<b>11</b> Middle Park Community Centre, 150 Middle Park Avenue, London SE9 5SD	Every fourth Tuesday of the month 10am to 12noon	Housing and general advice provided by Citizens Advice Greenwich

Hubs are not open on bank holidays.

We know times are tough. You can find lots of information about support from the council, local charities, and community groups at:  
[royalgreenwich.gov.uk/greenwich-supports](https://royalgreenwich.gov.uk/greenwich-supports)

Food will be provided at  
locations marked with a



See further details inside this leaflet.

# GREENWICH SUPPORTS



Get the right support, when and where you need it. Whether you need help with your finances, your immigration status, or want to know what benefits you are entitled to – we will be on hand to help you.

For more information visit [royalgreenwich.gov.uk/advicehubs](https://royalgreenwich.gov.uk/advicehubs)

For confidential support or information on domestic abuse call  
**020 8317 8273** or email [referrals\\_gdva@h4w.co.uk](mailto:referrals_gdva@h4w.co.uk)